

SONORA

INSTALLATION INSTRUCTIONS

SOUND-ABSORBING WALLCOVERING



INSTABILELAB®
WALLCOVERING - TEXTILE - CARPETS

instabilelab.com

SUPPLIED PRODUCT:

SOUND-ABSORBING WALLCOVERING

SONORA



GLUE TEXRECO

SOUND-ABSORBING WALLCOVERING

MANDATORY CONDITIONS FOR THE INSTALLATION OF WALLPAPERS

1

MAKE SURE THAT THE PACKAGE CONTAINS ALL THE MATERIAL REQUIRED FOR INSTALLATION (ROLLS, TEXRECO GLUE*, INSTALLATION SCHEME) AND GET THE NECESSARY EQUIPMENT (see picture A). WE RECOMMEND THAT YOU HAVE A SPIRIT LEVEL (LASER OR MANUAL) FOR CORRECT POSITIONING OF THE WALLPAPER.

2

ENSURE THAT THE WALL IS SUITABLE FOR THE WALLCOVERING (see picture B).

THE WALL MUST BE **SMOOTH**, WITHOUT CRACKS, WITHOUT MOISTURE, WITH NO TRACES OF SEEPAGE OR RISING DAMP. ANY CRACKS OR SLIGHT INFILTRATIONS MUST BE TREATED BEFOREHAND.

3

WARNING: FOR THE INSTALLATION OF THE SOUND-ABSORBING WALLPAPER, TEMPERATURE MUST BE BETWEEN 10° AND 38°.

A



*GLUE INCLUDED

B



IMPORTANT! IF THE WALL HAS EVIDENT DEFECTS, LARGE WATER INFILTRATIONS OR EVIDENT TRACES OF MOULD, **WE ADVISE AGAINST PROCEEDING WITH THE INSTALLATION** UNTIL THE WALL HAS BEEN RECOVERED WITH THE APPROPRIATE BUILDING PRODUCTS.

IN ANY CASE, WE RECOMMEND THAT YOU ENGAGE THE SERVICES OF AN EXPERIENCED PROFESSIONAL INSTALLER WHO WILL ASSESS THE INSTALLATION WORK.

IMPORTANT! INSTABILELAB WILL NOT BE HELD RESPONSIBLE FOR PROBLEMS CAUSED BY THE INSTALLATION OF ITS WALLPAPERS DUE TO CARELESSNESS OR MISTAKES MADE DURING THE INSTALLATION PROCESS. IT WILL BE THE INSTALLER'S OR CUSTOMER'S RESPONSIBILITY TO PROMPTLY REPORT TO INSTABILELAB ANY MISSING MATERIAL IN THE PACKAGE, WALLPAPER DEFECTS OR PRINTING ERRORS.

INSTABILELAB RESERVES THE RIGHT TO CHANGE OR INTEGRATE THE INSTALLATION INSTRUCTIONS AT ANY TIME, WITHOUT PRIOR NOTICE.

4

BEFORE STARTING

USE OF TEXRECO GLUE: THE PRODUCT IS READY TO USE, IF NECESSARY DILUTE WITH 5-10% CLEAN WATER. **CONSUMPTION:** 400 G/SQ.M. LET IT DRY FOR AT LEAST 48 HOURS.

4.1

BEFORE STARTING, TAKE **THE INSTALLATION SCHEME SHEET** AND MARK THE VARIOUS ROLL WIDTHS ON THE WALL WITH A PENCIL, CHECKING THE PLUMB. [1] [2]

ATTENTION: when measuring the width of the first roll calculate the lateral excess, which is usually already added in the order confirmation.

5

WALLPAPER LAYING

IT IS RECOMMENDED TO START INSTALLATION FROM THE 2ND ROLL, FOR BETTER MANAGEMENT OF POSSIBLE IRREGULARITIES OF THE WALL.

APPLY A COPIOUS COAT OF GLUE ON THE WALL ONLY IN THE CORRESPONDING SECTOR, WITH A MEDIUM-PILE ROLLER [3]

5.1

LAY THE ROLLS CAREFULLY, SO THAT THEY ARE WELL ALIGNED, NOT OVERLAPPING AND THAT THEY FOLLOW THE DESIGN OF THE CHOSEN GRAPHIC. LAY THE ROLL SO THAT IT ADHERES WELL TO THE WALL, USING A PLASTIC WALLCOVERING SMOOTHING TOOL. [4] [5]

5.2

MAKE SURE THAT THE ROLL IS WELL FIXED ON THE EDGES AND THAT THERE ARE NO BUBBLES OR NOT WELL GLUED PARTS.

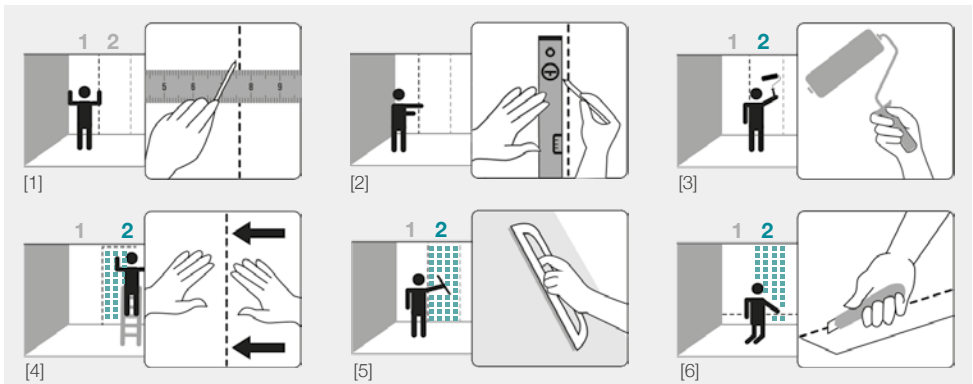
6

REMOVING EXCESS

TRIM OFF THE EXCESS OF THE ROLL WITH A SHARP CUTTER, USING THE WALLPAPER SMOOTHER AS A STRAIGHTEDGE. DO THE SAME FOR ALL REMAINING ROLLS, **MAKING SURE TO FOLLOW EACH STEP.** [6]

6.1

DAB THE ROLLS WITH A CLOTH DAMPENED WITH CLEAN WATER, ESPECIALLY IN THE JOINTS, TO REMOVE EXCESS OR RESIDUAL GLUE.



Headquarters: Via Rivale, 59 - 30036 - Santa Maria di Sala - VENEZIA - Italy
The Club: Via Einstein, 8 - 30036 - Santa Maria di Sala - VENEZIA - Italy
Tel.+39 041 5760611 - info@instabilelab.it

www.instabilelab.com



instabilelab.com